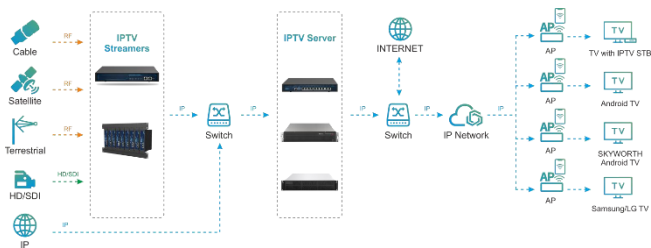


AT-PTV-HE4IFCAM256

IPTV Head End



The **AT-PTV-HE4IFCAM256** series is a platform product for centralized processing of small digital or IPTV front-end services. The installation method is flexible and can be installed in cabinets, wall-mounted, and Desktop Device parameter configuration can be operated through local or cloud network. The WEB page is beautiful and easy to understand, and the operation is simple. It has intelligent functions such as parameter batch import, export and exception reminder. It is a device that highly integrated, cost-effective IPTV front-end signal comprehensive processing equipment.

System Connection Diagram

- Card design, 2 cards with 4 HDMI and 4 DVBS/S2 input
- Support 4 Slots CAM and 4 Port DVBS/S2
- Support PID remapping, PSI/SI information editing and insertion
- Supports optional MPTS or SPTS output. For MPTS, the maximum supported is 4 IP addresses, for SPTS, the maximum supported is 256 IP addresses.
- 1 Gigabit port and 1 management port operated through PC (WEB), the device supports cloud management

Technical Specification

Supply Voltage	DC12V
Maximum Current	7000mA
Installation form	1U19inch chassis, wall hanging, Desktop
Connector Input Module	Total number of slots: 2 4 Slots CAM and 4 Port DVBS/S2
IP Output Connector	1 Gigabit RJ45 network port
IP Output Format	Support UDP/RTP protocol output. Supports SPTS/MPTS stream Processing, and supports 256 IP addresses
Working Temperature	-10 °C ~ 45 °C
Working Humidity	40% ~ 70%
Storage Temperature	-40 °C ~ 70 °C
Storage Humidity	40% ~ 95%
Dimension	318mm(L) x 260mm(W) x 44mm(H)