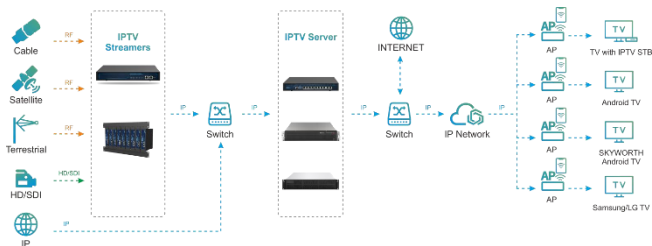


AT-PTV-200EU

IPTV Server



The **AT-PTV-200EU** is a compacted size yet powerful IPTV server to manage the IPTV service and Android box. With the our dedicated made software, AT-PTV-200EU supports to manage 200 users and 50HD IPTV services through 10 internet data ports. There's a pre-installed PMS for small hotel to input the client's name and display it in the welcome screen. It is a perfect choice for small or medium size hotel to get the best customer satisfaction through

System Connection Diagram

- Convert protocols among UDP/RTP/RTMP/HTTP/HLS and SRT
- Customize Logo in theme and living channels
- Easy channel lineup and group function
- Advertisement insertion through picture and video
- Automatically search set top box and assign IP accordingly in local network
- Remotely software upgrade and user-experience control on STB
- Graphic user interface for easy configuration

Technical Specification

Input Voltage	90~264VAC, DC 12V 5A
Rack Space	1RU
Input Connector	RJ45, 100/1000M Auto-Negotiate
Input Protocols	UDP/RTP/RTMP/HTTP/HLS/SRT
IP Addressing	Unicast and Multicast
Net Weight	2.26KG
Dimension	482mm(W) x 44mm(H) x 260mm(D)