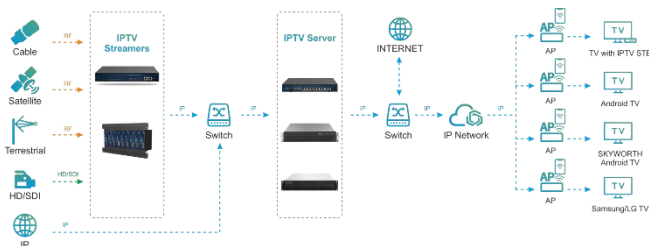


AT-PTV-1000EU

IPTV Server



The **AT-PTV-1000EU** is perfect for a variety of settings, including hotels, schools, cruise ships, hospitals, prisons, and so forth. It can access media streaming content from any location. Supports 1000 end users and 10 data ports in 100/1000M. With high integration, high cost performance, high configuration features, and the ability to integrate into existing systems, this outstanding IPTV server offers streaming media release and mainstream protocol encapsulation format conversion. Along with supporting numerous languages, cloud network administration, live video, VOD, order food service, shopping online, information release and other functions, it can also interact with a hotel's PMS system. Through DATA port, web-based NMS management is used to control this device.

System Connection Diagram

- Protocol conversion among UDP/RTP/RTSP/HTTP/DASH/RTMP/HLS/SRT
- Support 100HD/200SD, 128GB SSD, 32GB RAM, with an additional 4TB hard disk
- Support cloud network management
- Support program PSI/SI information editing and MPTS/SPTS parsing
- Support user management software and terminal online software upgrade
- Can integrate with PMS system for hotel
- Support end-user management, Channel program list management
- Support live video, playback, VOD, video stream processing, and advertising (video, text, image) overlay, hotel welcome message

Technical Specification

Supply Voltage	90~264VAC
Maximum Current	8500mA
Network Card	8*Intel i210 for 1Gbe BASE-T
CPU	Xeon series
SSD(MSATA)	128GB (default)
RAM Memory	32GB (default) unbuffered (UDIMM) DDR4 (228-pin) EcC up to 2666MHz
Output Protocols	UDP/RTP/RTSP/HTTP/DASH/RTMP/ HLS/SRT
Dimension	484mm(W) x 478mm(D) x 88,6mm(H)