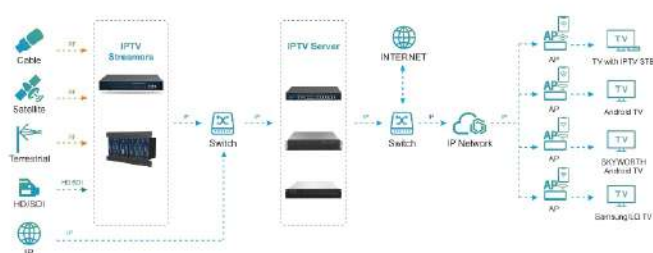


**AT-PTV-HE4IFHDM256**

IPTV Head End



The AT-PTV-HE4IFHDM256 series is a platform product for centralized processing of small digital or IPTV front-end services. The installation method is flexible and can be installed in cabinets, wall-mounted, and Desktop Device parameter configuration can be operated through local or cloud network. The WEB page is beautiful and easy to understand, and the operation is simple. It has intelligent functions such as parameter batch import, export and exception reminder. It is a device that highly integrated, cost-effective IPTV front-end signal comprehensive processing equipment.

**System Connection Diagram**

- Card design, 2 cards with 4 HDMI and 4 DVBS/S2 input
- Support H.264 video encoding input
- Support 4 channels, DVBS-S2 input, supports BISS descrambling
- Support UDP/RTP protocol input, supports SPTS/MPTS steam processing
- Support PID remapping, PSI/SI information editing and insetion
- Support optional MPTS or SPTS output. In MPTS, the maximum supported is 8 IP addresses; in SPTS, the maximum supported is 256 IP addresses.

**Technical Specification**

Supply Voltage	DC12V
Maximum Current	7000mA
Installation form	1U19inch chassis, wall hanging, Desktop
Connector Input Module	Total number of slots: 2 Each slot can support modules: 4HDMI + 4 DVBS/S2 encoding module
IP Output Connector	1 Gigabit RJ45 network port
IP Output Format	Support UDP/RTP protocol output. Supports SPTS/MPTS stream Processing, and supports 256 IP addresses
Working Temperature	-10 °C ~ 45 °C
Working Humidity	40% ~ 70%
Storage Temperature	-40 °C ~ 70 °C
Storage Humidity	40% ~ 95%
Dimension	318mm(L) x 260mm(W) x 44mm(H)